



Introductory Statement

The Guiding Council for Mental Health and Addictions is progressing on the call to action to deeply examine our responses to community members experiencing a mental health or substance use crisis. We expect that residents of Ottawa will have equitable access to a well-resourced, non-policing, alternative mental health and substance use crisis response service. This service will be rooted in a trauma-informed, anti-racist approach. The Guiding Council Secretariat is now at the community consultation stage until the end of November.



Our Journey Includes:

1. Stakeholder Mapping

Diverse communities affected by the issue across the city of Ottawa, service providers, and frontline workers.

3. Community Engagement

We are holding consultations and 1:1 interviews and using online surveys to seek authentic engagement with diverse and marginalized voices who are most often negatively impacted by the existing crisis response system, as well as frontline workers and service providers. This work is done through a community development process that includes multi-stakeholder consultations. As of November 1, 2022, we have completed 18 consultations.

5. Strategy Development

We will develop recommendations and actions based on consultation feedback by:

- analyzing the results of the consultations
- validating what we heard from you
- comparing consultations results with the research
- creating a strategy report that includes recommendations for pilots

6. Business Case

A business case will provide a cost-benefit analysis of and justification for recommended pilot(s) for alternative options for crisis response

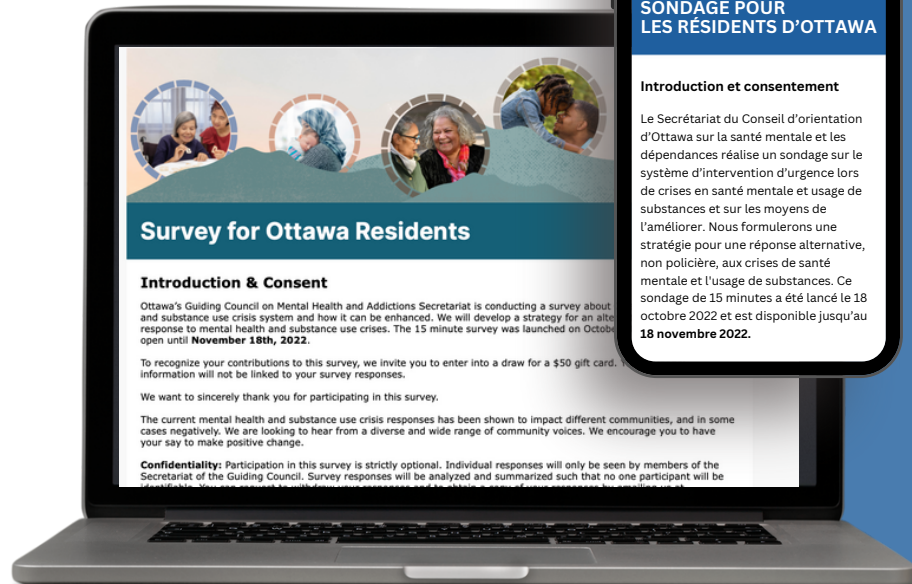
2. Established a reference group of people with lived and living experience.

The Reference Group provides expert counsel and share their insights from the much needed critical lens of lived experience. Participants represent themselves rather than an organization.

4. Research

We have examined what other cities are doing to address mental health and substance use crisis response, including Toronto, Vancouver, Niagara, Eugene, OR. Other research studies include:

- a deep dive into past 911 calls directed to Ottawa Police Services
- a literature review of existing studies



7. Call to Action – Get Involved!

Check out our Guiding Council members

Check out our website!

www.ottawagcmha.ca

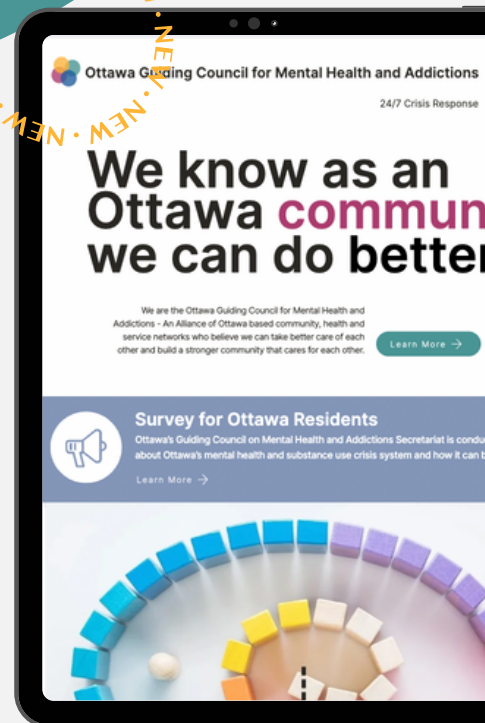
Check out the Secretariat team

Complete our survey

Now Live >

Keep up to date with the Ottawa GCMHA by signing up to our monthly e-newsletter.

SIGN UP



Meet the Secretariat Team



Liz Wigfull
Secretariat Director



Sahada Alolo
Secretariat Director



Saira John
Research Analyst



Jessica Ryanyeninka
Program Coordinator



www.ottawagcmha.ca



@ogcmha



@ogcmha



@ogcmha